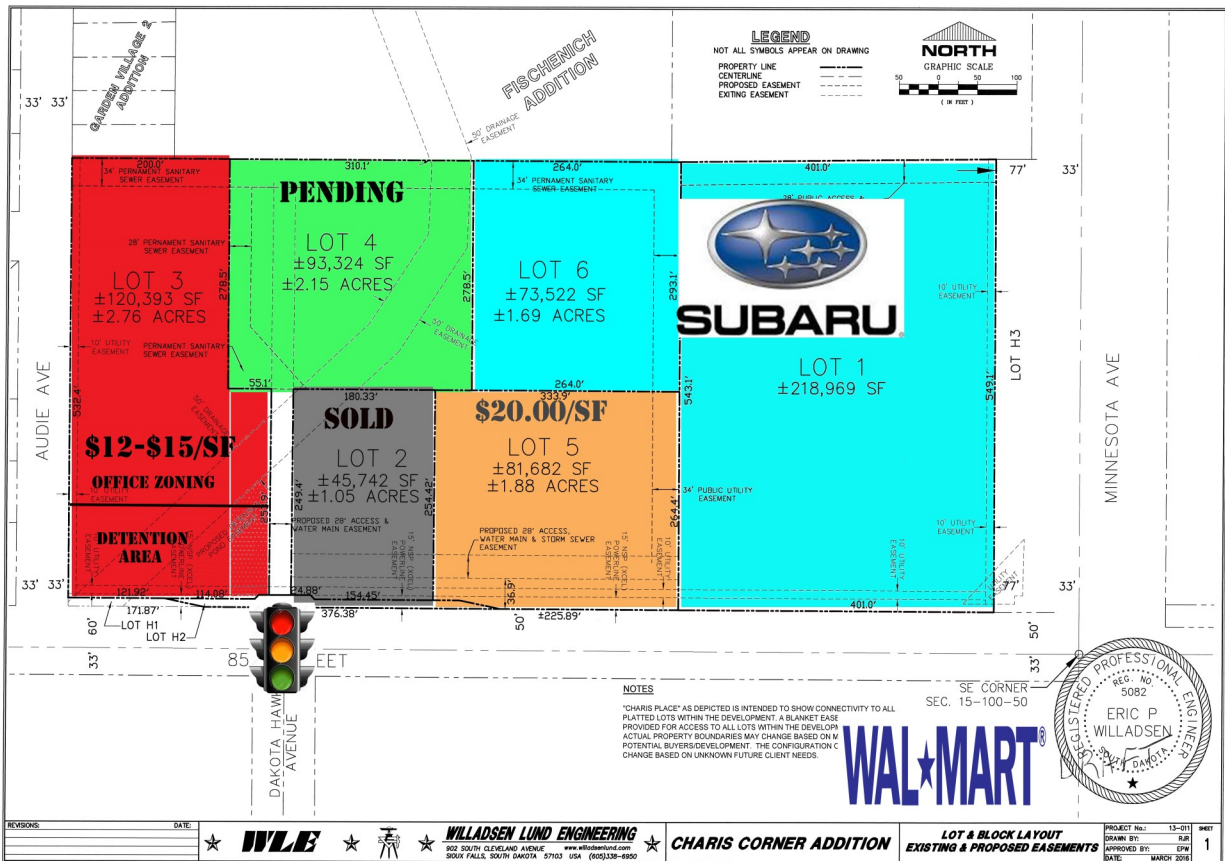


COMMERCIAL LAND

FOR SALE



Narrative: Multiple land options available across from the new Walmart Supercenter and adjacent to Schulte Subaru. Lot sizes can be divided. Entry point at lot 2 will be the main signalized entrance to Walmart. Walmart opened in May 2016. Join the hottest new retail corner in the city.

Innovative Real Estate Solutions



COMMERCIAL REAL ESTATE

RON NELSON
 C - 605-728-7600
 ron@ncommercial.com



Member firm



www.ncommercial.com

© 2017 NCRE

**Information contained herein provided by owner, city or county records. Purchaser or lessee should independently verify. All information contained herein deemed reliable, but not guaranteed*