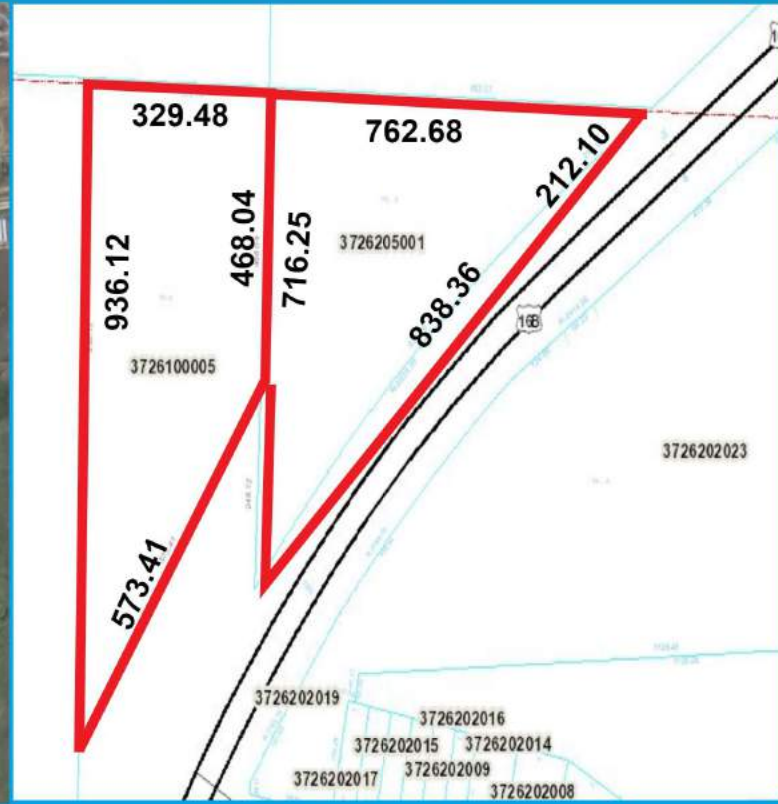


# For Sale: Multi-Family Land



1330 Catron Blvd., Rapid City, SD



Lot Size: 10.8 acres

Sale Price: \$1,411,344; \$3.00 sq. ft.

Zoning: MDR - Medium Density Residential. DD designation. Final development plan approval is the only city Zoning approval required.

Allowed Uses: Single family, 2-family and multi-family, apartments

Traffic Count: 13,000+ cars per day

Catron Blvd is the Southern ring road of the City. This property is on Hwy. 16/Catron Blvd., 1 1/4 miles to Walmart, 1/4 miles to Mt. Rushmore Rd., easy access to all points of the City.

Demographic Data	1 mi radius	3 mi radius	5 mi radius
Population (2017)	769	24,995	62,420
Households (2017)	308	10,418	26,426
Median household income (2017)	\$65,862	\$70,265	\$60,761
Total Employees	242	14,687	43,520
Total Establishments	18	845	3,855



www.Ncommercial.com  
605-977-0778

RON NELSON  
C - 605-728-7600  
ron@Ncommercial.com



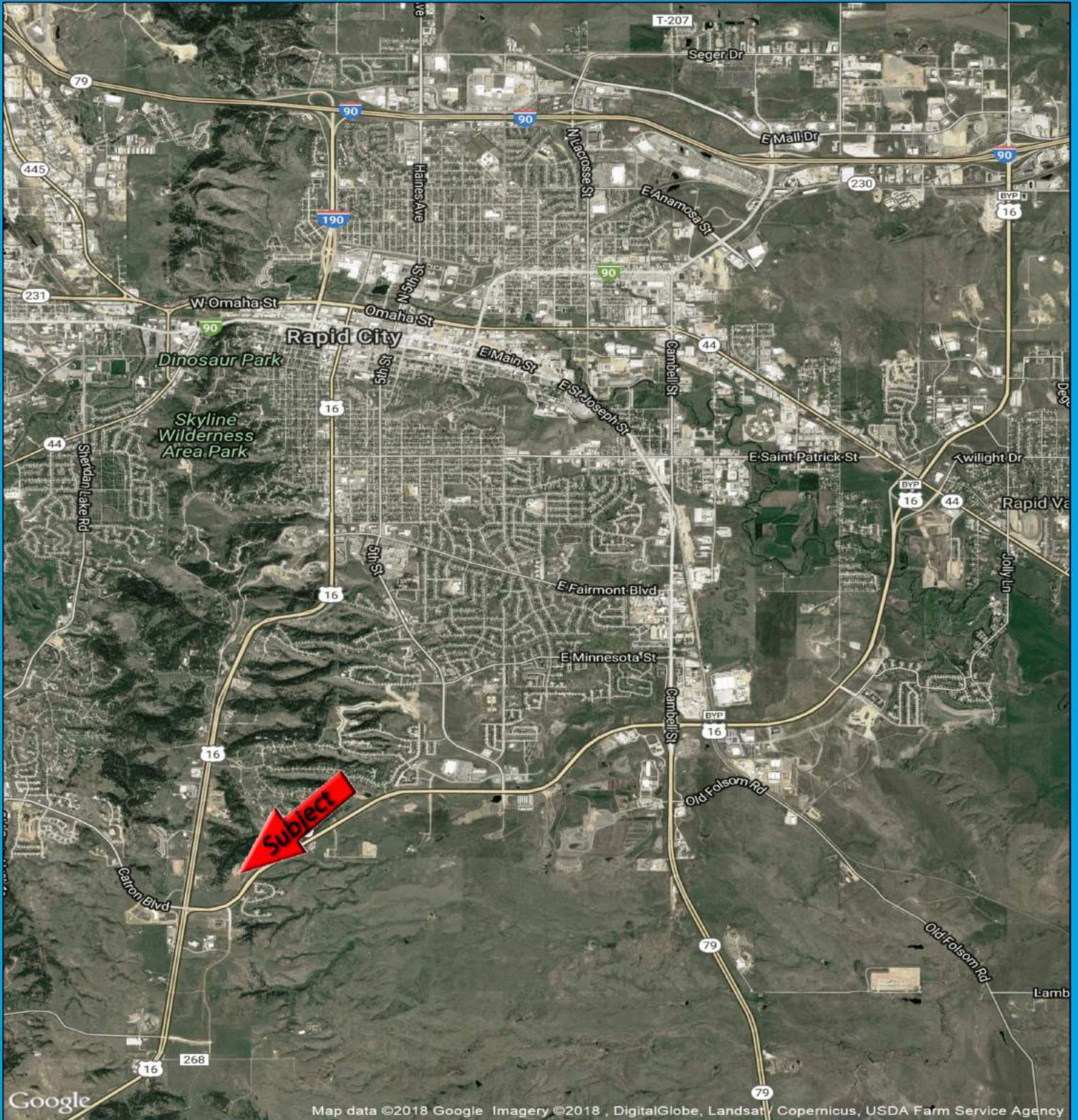
Member



\*Information contained herein provided by owner, city or county records. Purchaser or lessee should independently verify. All information contained herein deemed reliable, but not guaranteed



# AERIAL



COMMERCIAL REAL ESTATE

[www.Ncommercial.com](http://www.Ncommercial.com)

605-977-0778

\*Information contained herein provided by owner, city or county records. Purchaser or lessee should independently verify. All information contained herein deemed reliable, but not guaranteed.

RON NELSON  
C - 605-728-7600  
[ron@Ncommercial.com](mailto:ron@Ncommercial.com)



Member

