

For Lease: Free Standing Office Building



501 W 27th St., Sioux Falls, SD



In the Heart of the City!

1 Lot in from Minnesota Ave

Space Size: 768 sq. ft. main, 768 sq. ft. lower level

Private Parking lot in rear

Lease Rate: \$1,000/mo., Plus utilities, snow and lawn care

2 private offices, open center area

Monument sign visible from Minnesota Ave

This is a cute freestanding building that would work great for any smaller office setting. Professionally and tastefully decorated inside.

In the Center of the City - Just 1 lot off 27th and Minnesota avenue. The monument sign has good Minnesota ave. visibility. Parking lot in back.

A lot of features in a very compact package!



www.Ncommercial.com
605-977-0778

RON NELSON
C - 605-728-7600
ron@Ncommercial.com

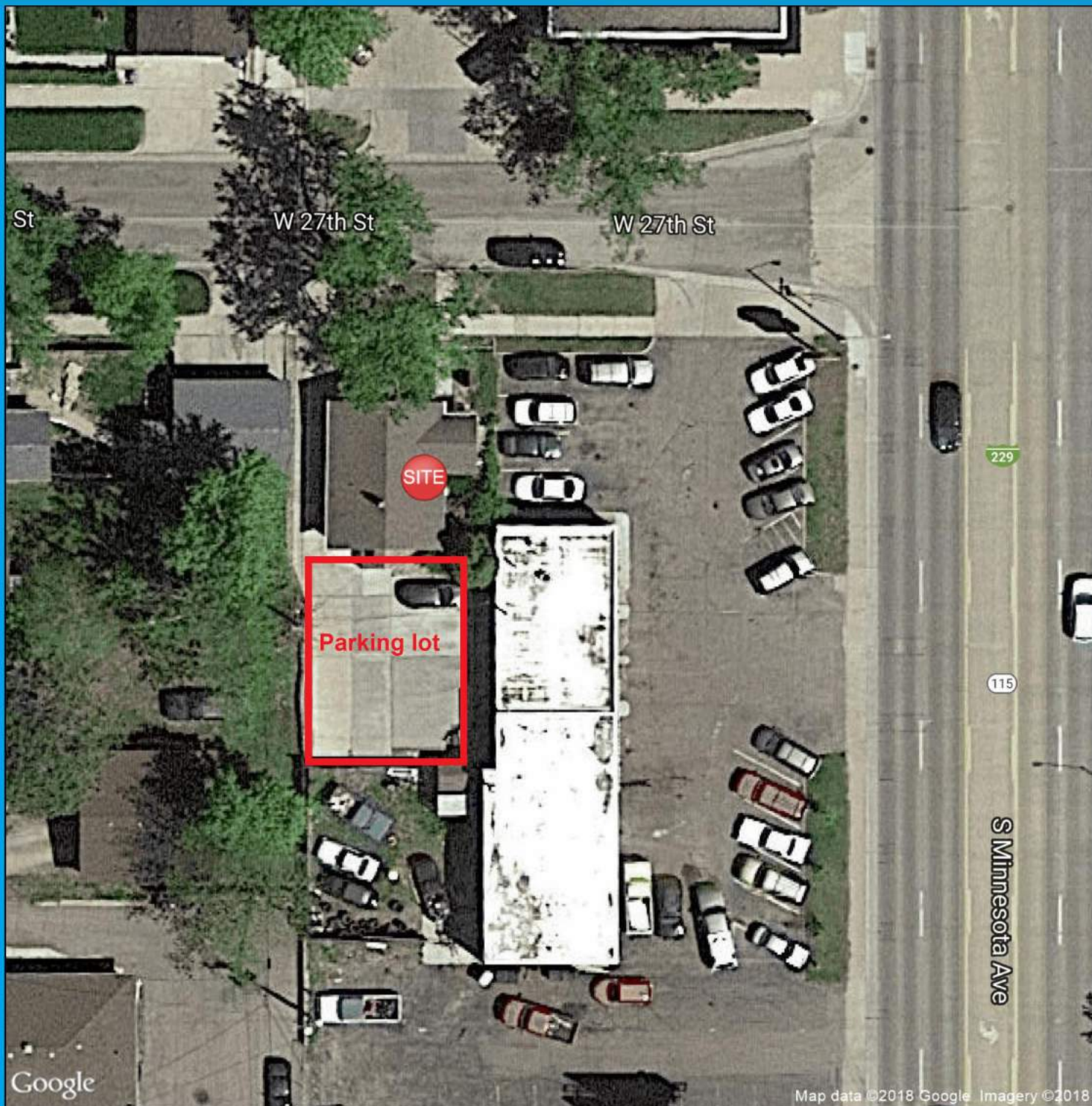


Member



*Information contained herein provided by owner, city or county records. Purchaser or lessee should independently verify. All information contained herein deemed reliable, but not guaranteed

AERIAL



COMMERCIAL REAL ESTATE

www.Ncommercial.com

605-977-0778

*Information contained herein provided by owner, city or county records. Purchaser or lessee should independently verify. All information contained herein deemed reliable, but not guaranteed.

RON NELSON
C - 605-728-7600
ron@Ncommercial.com



Member



PHOTOS



Wide Open work area looking North



Work area looking South



French Door to Office



Restroom



Open dry storage/work area in lower level



Additional lower level storage



RON NELSON
C - 605-728-7600
ron@Ncommercial.com

www.Ncommercial.com
605-977-0778



Member



**Information contained herein provided by owner, city or county records. Purchaser or lessee should independently verify. All information contained hereindeemed reliable, but not guaranteed*