

For Lease: High Profile Office Space



4300 S. Louise Ave., Sioux Falls, SD



Just off 49th & Louise - one of the most recognized corners in Sioux Falls!

Space Size: 660 +/- sq. ft.

Rental Rate: \$790/month plus utilities

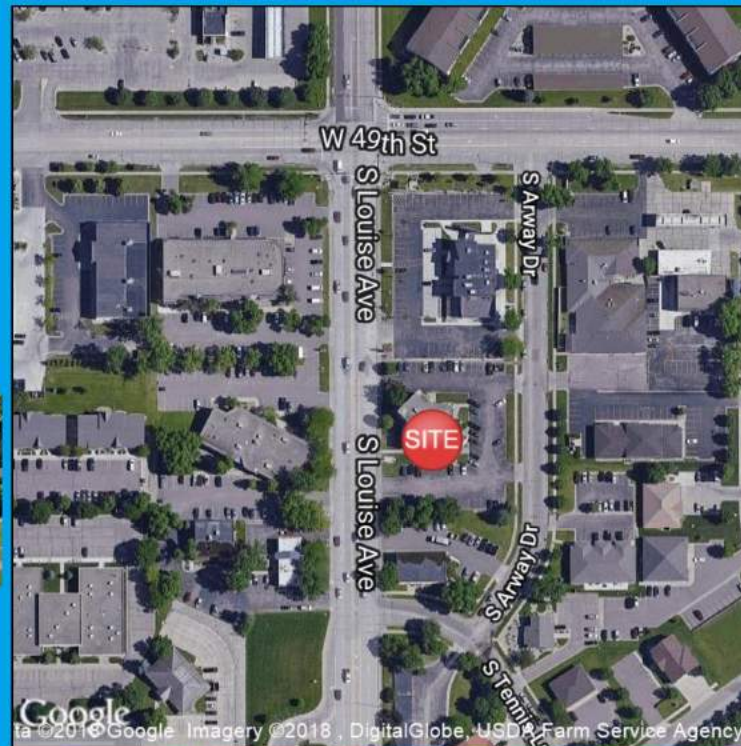
Traffic Count:

19,400 cars per day on Louise Ave
12,200 cars per day on 49th st.

Available Immediately!

This executive office has incredible visibility and value!

- * High profile location
- * One private office
- * Reception Area
- * Highly visible building
- * Monument sign for good recognition
- * Storage/copier room



www.Ncommercial.com
605-977-0778

RON NELSON
C - 605-728-7600
ron@Ncommercial.com

RICHARD THOMASON
C-605-521-4449
richard@Ncommercial.com



Member

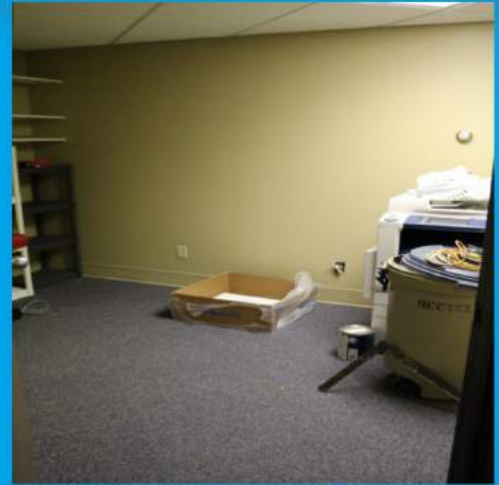


*Information contained herein provided by owner, city or county records. Purchaser or lessee should independently verify. All information contained herein deemed reliable, but not guaranteed

PHOTOS



Reception Area



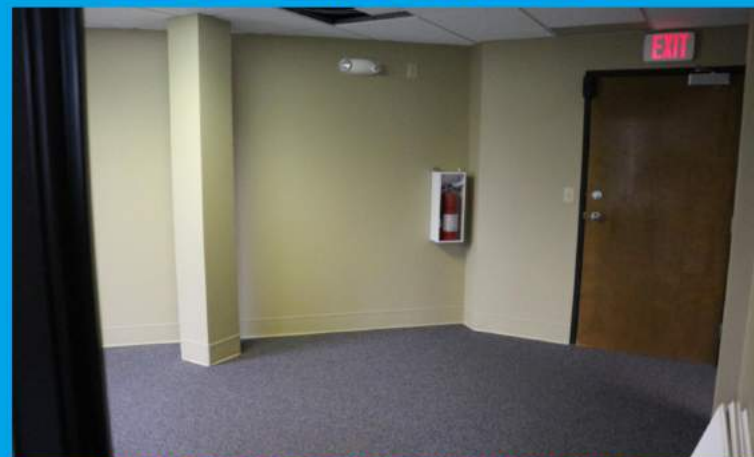
Storage/Copy Room



View from reception area into Office



View into storage/copy room



View from office into reception area



View from office into reception area



COMMERCIAL REAL ESTATE

www.Ncommercial.com

605-977-0778

RON NELSON
C - 605-728-7600
ron@Ncommercial.com

RICHARD THOMASON
C-605-521-4449
richard@Ncommercial.com



Member



**Information contained herein provided by owner, city or county records. Purchaser or lessee should independently verify. All information contained herein deemed reliable, but not guaranteed*

FLOOR PLAN



EAST HOUSTON HO 44-11-00000

4900 S. Louise

This plan is to illustrate general space layout. Not drawn to scale.

Un



COMMERCIAL REAL ESTATE

www.Ncommercial.com

605-977-0778

RON NELSON
C - 605-728-7600
ron@Ncommercial.com

RICHARD THOMASON
C-605-521-4449
richard@Ncommercial.com



Member



**Information contained herein provided by owner, city or county records. Purchaser or lessee should independently verify. All information contained hereindeemed reliable, but not guaranteed*

AERIAL



COMMERCIAL REAL ESTATE

www.Ncommercial.com

605-977-0778

RON NELSON

C - 605-728-7600

ron@Ncommercial.com

RICHARD THOMASON

C - 605-521-4449

richard@Ncommercial.com



Member



*Information contained herein provided by owner, city or county records. Purchaser or lessee should independently verify. All information contained herein deemed reliable, but not guaranteed.