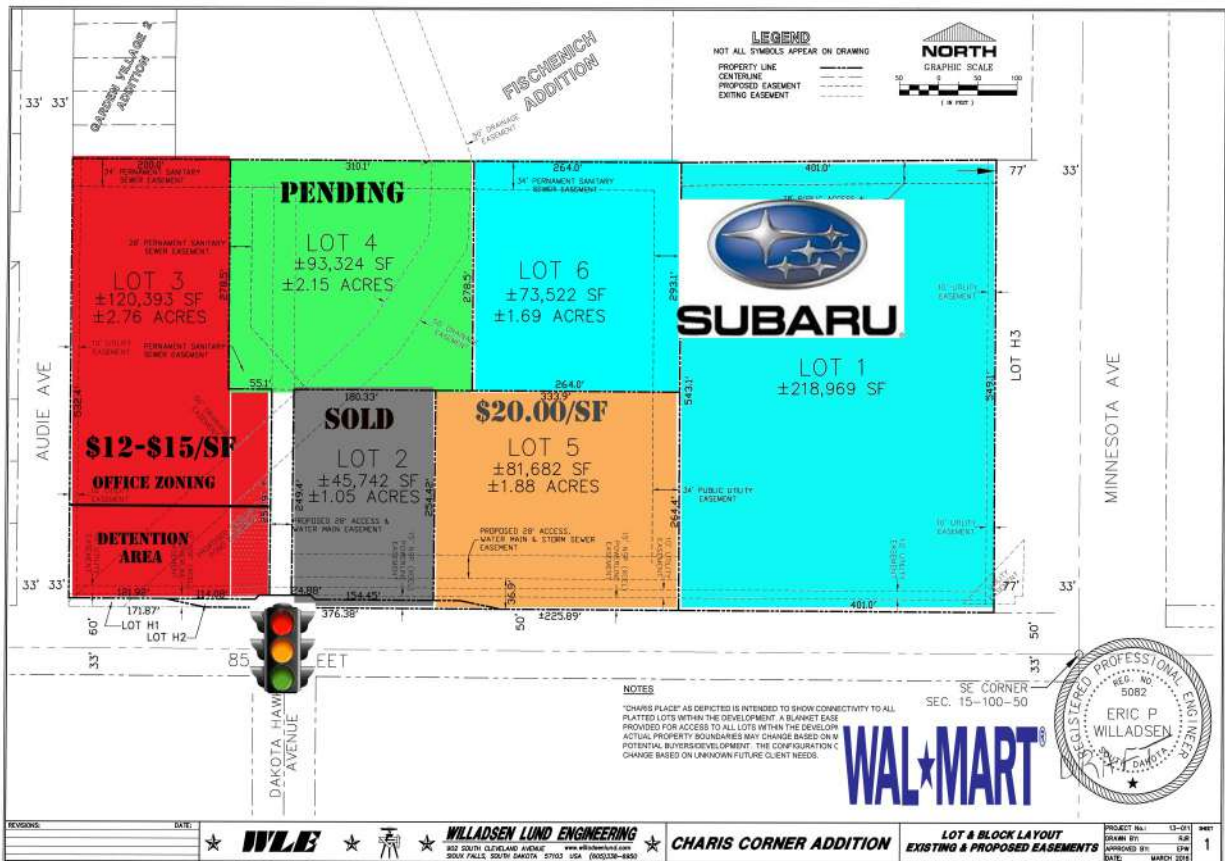


# COMMERCIAL LAND

# FOR SALE



**Narrative: Multiple land options available across from the new Walmart Supercenter and adjacent to Schulte Subaru. Lot sizes can be divided. Entry point at lot 2 will be the main signaled entrance to Walmart. Walmart opened in May 2016. Join the hottest new retail corner in the city.**

*Innovative Real Estate Solutions*



**COMMERCIAL REAL ESTATE**

**RON NELSON**  
 C - 605-728-7600  
 ron@ncommercial.com



Member firm



www.ncommercial.com

© 2017 NCRE

*\*Information contained herein provided by owner, city or county records. Purchaser or lessee should independently verify. All information contained herein deemed reliable, but not guaranteed*